

# 2017 And Newer Ford Super Duty AUX Upfitter Switches



**Models Affected:** 2017 to present model year F-250/350/450/550 Super Duty Trucks with optional Upfitter Switches.

**Description:** The Ford Upfitter Switches are optional overhead console mount switches (Option Code 66S) that control under hood mounted relays. These relays power six blunt cut wires that are taped on a harness near the upfitter auxiliary relay box that can be found on the driver's side of the engine compartment. The six blunt cut wires are as follows:

Switches	Circuit	Color	Fuse #	Rating
Aux 1	CB117	Brown / Green	F10	25A

Aux 2	CB114	Violet / Orange	F9	25A
Aux 3	CB116	Blue / Green	F8	25A
Aux 4	CB113	Gray / Brown	F7	25A
Aux 5	CB115	Brown / Blue	F1	40A
Aux 6	CB118	Gray / Orange	F2	40A

In addition to the upfitter switch blunt cut wires, this bundle contains the following blunt cut circuits:

<b>Description</b>	<b>Circuit</b>	<b>Color</b>	<b>Fuse #</b>	<b>Rating</b>
Run/ Start Output	CB111	Brown	F3	20A
Battery Hot Output	SB106	Brown / Red	F6	20A
PTO Relay Control	CE924	Blue / Green	N/A	N/A
PTO Relay Output	CB112	Green / White	F5	25A

All relays and fuses are located in the upfitter relay box.



Figure 1: 2017 Super Duty Upfitter switch location

NOTE: Upfitter Switches cannot be added to a vehicle that was not built with this option at production.

Figure 2: Upfitter Relay Box and upfitter switch blunt cut output location.

#### **Accessing blunt cuts wires:**

On vehicles with dual batteries, removing the upfitter relay box will provide additional access to the blunt cut wires.

1. Disconnect the electrical connector.
2. Release tabs and lift upwards to remove.

#### **To reinstall upfitter relay box:**

1. To install, reverse the removal procedure.

#### **Configuring Upfitter Switches 5 and 6 to Hot-at-all times.**

Upfitter relay box fuse F4 (5A) can be put into one of two positions. In Position A, auxiliary switch 5 and 6, operate with the ignition in RUN or START. In Position C, auxiliary switch 5 and 6 operate hot at all times.

The following procedure describes how to configure #5 and #6 upfitter switches to Battery hot.

1. Remove upfitter relay box cover.
2. Remove 5 Amp fuse located on the lower right hand corner of the upfitter relay box.
3. Slide the contact guard from position A (left) to position C (right) position.
4. Re-insert 5 Amp fuse into position C (right) position.
5. Replace relay box cover.

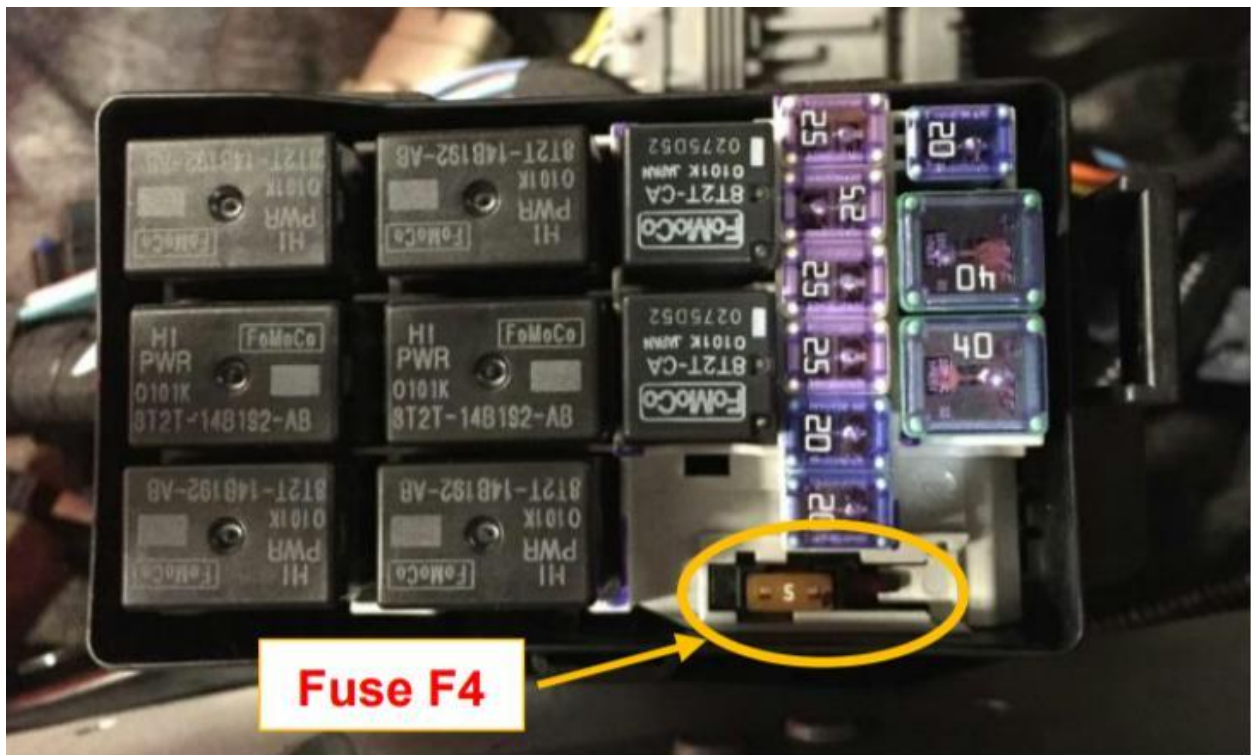
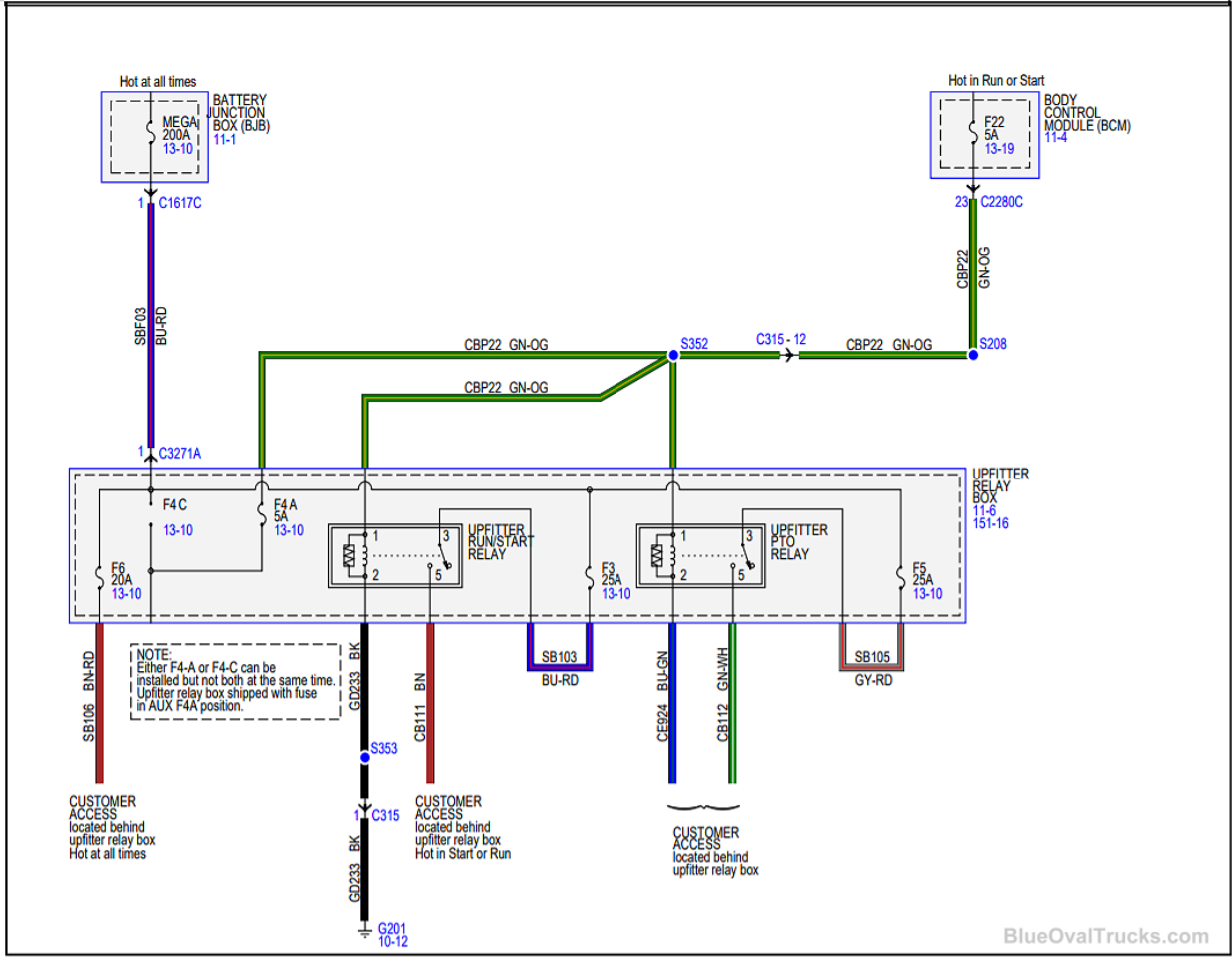
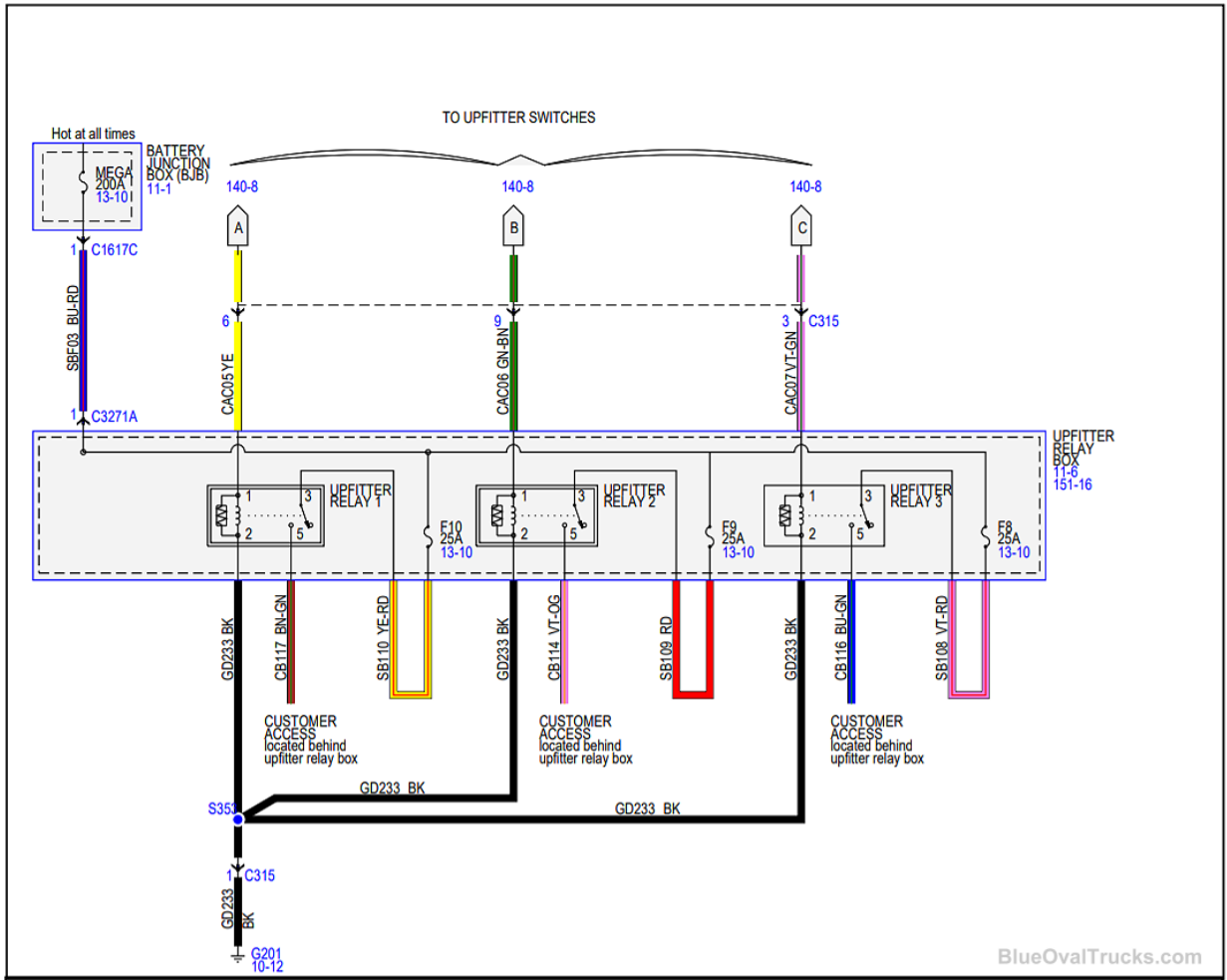
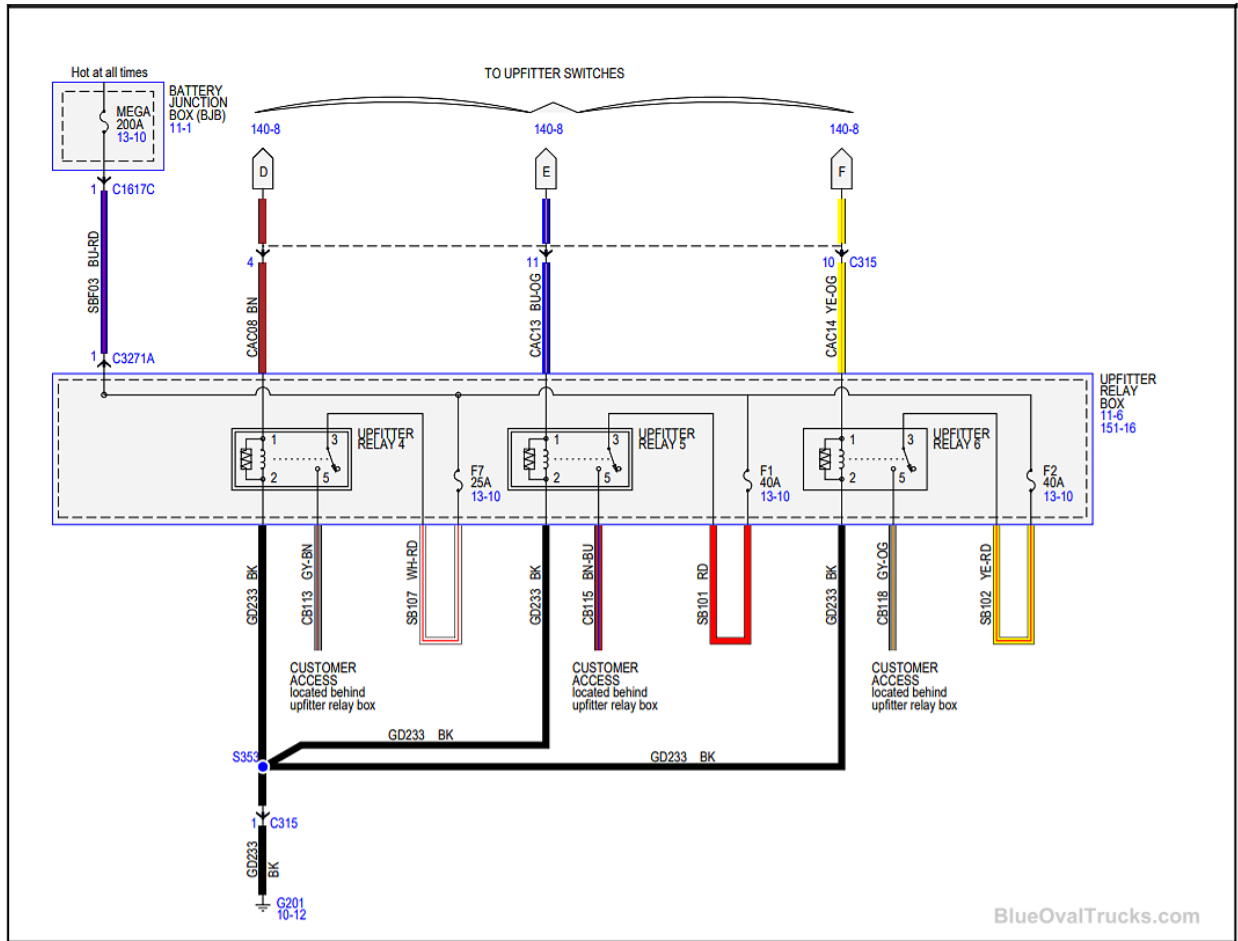


Figure 3: Fuse F4 location

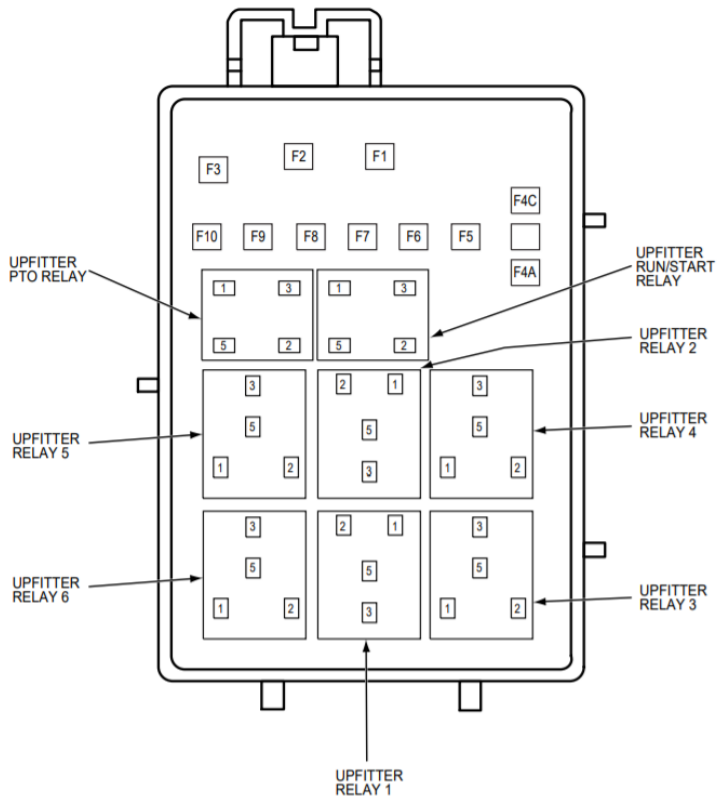
## Wiring Schematics







**Relay & Fuse Diagram**



BlueOvalTrucks.com

Fuse	Amps	Circuits protected
F1	40	Upfitter relay 5
F2	40	Upfitter relay 6
F3	25	Upfitter run/start relay
F4A or F4C	5	Upfitter switch
F5	25	Upfitter PTO relay
F6	20	Customer access
F7	25	Upfitter relay 4
F8	25	Upfitter relay 3
F9	25	Upfitter relay 2
F10	25	Upfitter relay 1